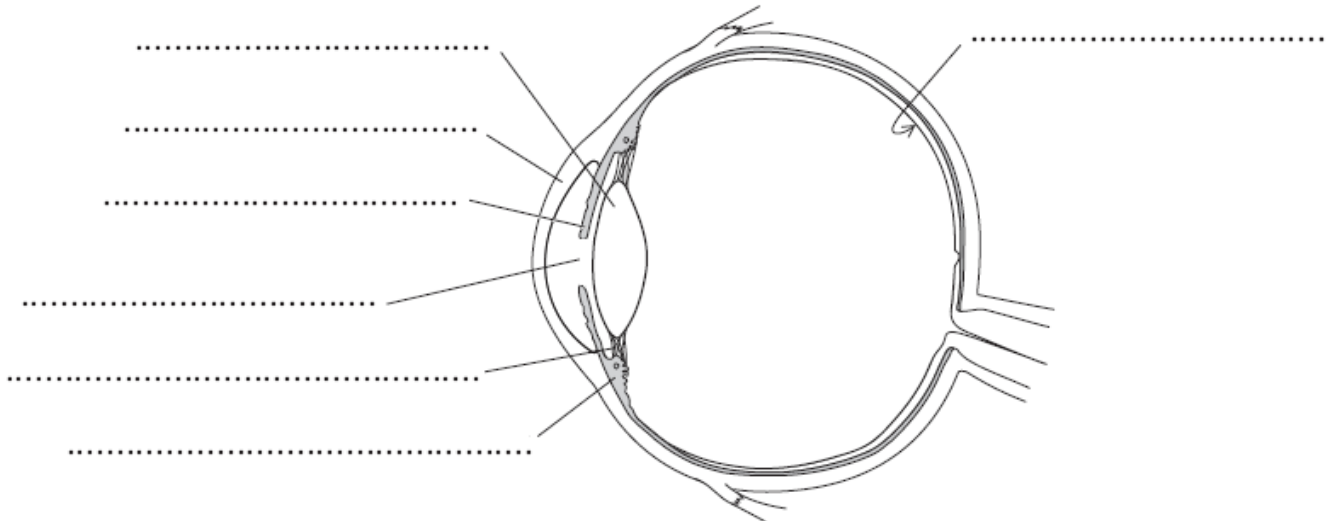


### The Eye

Here is a diagram of the eye, label the different parts.



Explain the function of the different parts of the eye.

Retina

---

---

---

---

Lens

---

---

---

---

Cornea

---

---

---

---

Pupil and Iris

---

---

---

---

Ciliary Muscle

---

---

---

---

Suspensory Ligaments

---

---

---

How do we change our focus from near objects to those in the distance?

---

---

---

What is the range of human vision?

---

How is the structure of the eye similar to the structure of a camera?

---

---

---

How is a camera changed to focus on objects at different distances (near and far)?

---

---

---

What is used instead of photographic film in a digital camera?

---

---