

Write your name here

Surname

Other names

**Pearson Edexcel  
International GCSE**

Centre Number

--	--	--	--	--	--

Candidate Number

--	--	--	--	--

# Mathematics A

**Level 1/2  
Paper 2H**



**Higher Tier**

Sample assessment material for first teaching September 2016

**Time: 2 hours**

Paper Reference

**4MA1/2H**

**You must have:**

Ruler graduated in centimetres and millimetres, protractor, compasses, pen, HB pencil, eraser, calculator. Tracing paper may be used.

Total Marks

--

## Instructions

- Use **black** ink or ball-point pen.
- **Fill in the boxes** at the top of this page with your name, centre number and candidate number.
- Answer **all** questions.
- Without sufficient working, correct answers may be awarded no marks.
- Answer the questions in the spaces provided  
– *there may be more space than you need.*
- **Calculators may be used.**
- You must **NOT** write anything on the formulae page.  
Anything you write on the formulae page will gain **NO** credit.

## Information

- The total mark for this paper is 100.
- The marks for **each** question are shown in brackets  
– *use this as a guide as to how much time to spend on each question.*

## Advice

- Read each question carefully before you start to answer it.
- Check your answers if you have time at the end.

Turn over ►

S51833A

©2016 Pearson Education Ltd.

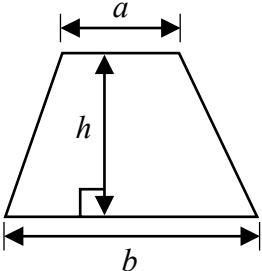
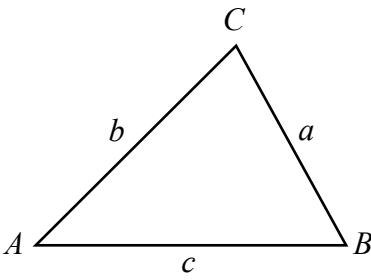
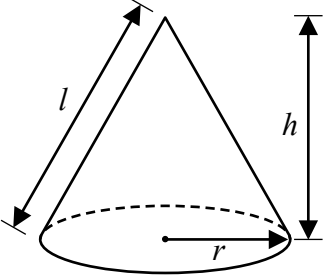
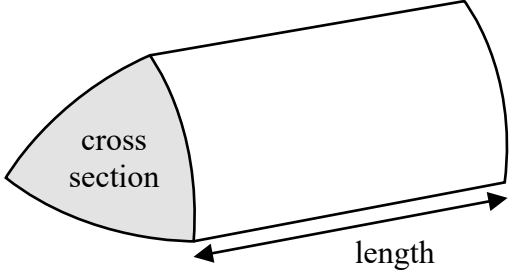
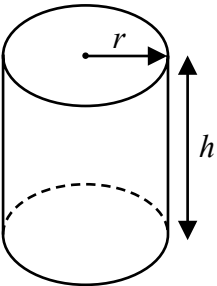
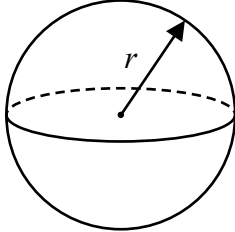
1/2/1/1/1/



**PEARSON**

**International GCSE Mathematics**

**Formulae sheet – Higher Tier**

<p><b>Arithmetic series</b></p> <p>Sum to <math>n</math> terms, <math>S_n = \frac{n}{2} [2a + (n - 1)d]</math></p>	<p><b>Area of trapezium</b> = <math>\frac{1}{2}(a + b)h</math></p>
<p><b>The quadratic equation</b></p> <p>The solutions of <math>ax^2 + bx + c = 0</math> where <math>a \neq 0</math> are given by:</p> $x = \frac{-b \pm \sqrt{b^2 - 4ac}}{2a}$	
<p><b>Trigonometry</b></p> 	<p><b>In any triangle <math>ABC</math></b></p> <p><b>Sine Rule</b> <math>\frac{a}{\sin A} = \frac{b}{\sin B} = \frac{c}{\sin C}</math></p> <p><b>Cosine Rule</b> <math>a^2 = b^2 + c^2 - 2bc \cos A</math></p> <p><b>Area of triangle</b> = <math>\frac{1}{2} ab \sin C</math></p>
<p><b>Volume of cone</b> = <math>\frac{1}{3} \pi r^2 h</math></p> <p><b>Curved surface area of cone</b> = <math>\pi r l</math></p> 	<p><b>Volume of prism</b> = area of cross section <math>\times</math> length</p> 
<p><b>Volume of cylinder</b> = <math>\pi r^2 h</math></p> <p><b>Curved surface area of cylinder</b> = <math>2\pi r h</math></p> 	<p><b>Volume of sphere</b> = <math>\frac{4}{3} \pi r^3</math></p> <p><b>Surface area of sphere</b> = <math>4\pi r^2</math></p> 

DO NOT WRITE IN THIS AREA

DO NOT WRITE IN THIS AREA

DO NOT WRITE IN THIS AREA

DO NOT WRITE IN THIS AREA

DO NOT WRITE IN THIS AREA

DO NOT WRITE IN THIS AREA

**Answer ALL TWENTY FIVE questions.**

**Write your answers in the spaces provided.**

**You must write down all stages in your working.**

- 1 Find the lowest common multiple (LCM) of 20, 30 and 45

.....

**(Total for Question 1 is 3 marks)**

- 2 The first four terms of an arithmetic sequence are

2      9      16      23

Write down an expression, in terms of  $n$ , for the  $n$ th term.

.....

**(Total for Question 2 is 2 marks)**

3

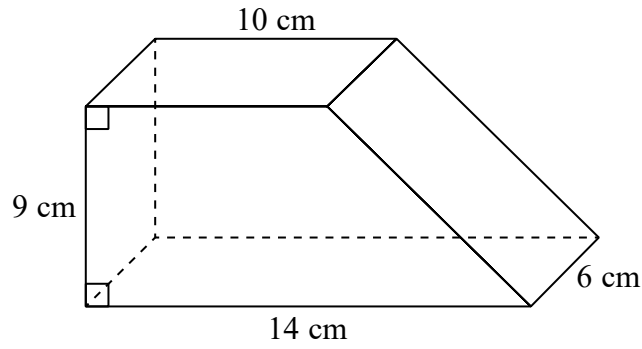


Diagram **NOT** accurately drawn

The diagram shows a solid prism.  
The cross section of the prism is a trapezium.

The prism is made from wood with density  $0.7 \text{ g/cm}^3$

Work out the mass of the prism.

.....g

**(Total for Question 3 is 4 marks)**

DO NOT WRITE IN THIS AREA

DO NOT WRITE IN THIS AREA

DO NOT WRITE IN THIS AREA

4 (a) Simplify  $p^5 \times p^4$

.....  
(1)

(b) Simplify  $(m^4)^{-3}$

.....  
(1)

(c) Write down the value of  $c^0$

.....  
(1)

(d) Write  $\sqrt[3]{2}$  as a power of 2

.....  
(1)

(e) Solve  $5(x + 7) = 2x - 10$   
Show clear algebraic working.

$x =$  .....  
(3)

**(Total for Question 4 is 7 marks)**

- 5 On 1 May 2012, the cost of 5 grams of gold was 14 000 rupees.  
The cost of gold decreased by 7.5% from 1 May 2012 to 1 May 2013

Work out the cost of 20 grams of gold on 1 May 2013

.....rupees

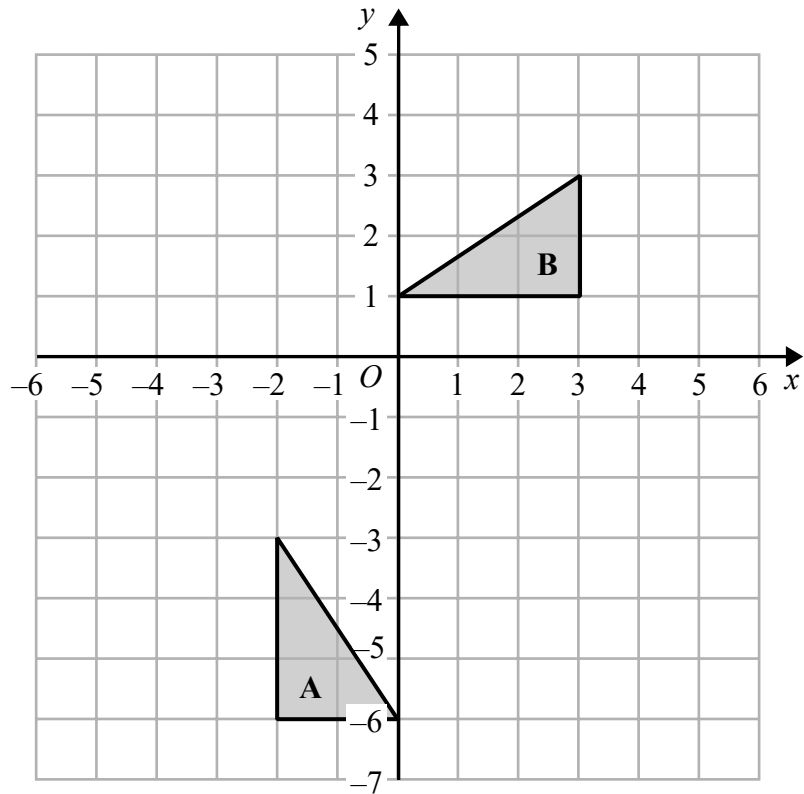
**(Total for Question 5 is 4 marks)**

DO NOT WRITE IN THIS AREA

DO NOT WRITE IN THIS AREA

DO NOT WRITE IN THIS AREA

6



(a) On the grid, translate triangle **A** by the vector  $\begin{pmatrix} 5 \\ 2 \end{pmatrix}$  (1)

(b) Describe fully the single transformation that maps triangle **A** onto triangle **B**.

(3)

**(Total for Question 6 is 4 marks)**

7  $a, b, c$  and  $d$  are 4 integers written in order of size, starting with the smallest integer.

The mean of  $a, b, c$  and  $d$  is 15

The sum of  $a, b$  and  $c$  is 39

(a) Find the value of  $d$ .

$$d = \dots\dots\dots (2)$$

Given also that the range of  $a, b, c$  and  $d$  is 10

(b) work out the median of  $a, b, c$  and  $d$ .

$$\dots\dots\dots (2)$$

**(Total for Question 7 is 4 marks)**



DO NOT WRITE IN THIS AREA

DO NOT WRITE IN THIS AREA

DO NOT WRITE IN THIS AREA

- 8 Kwo invests HK\$40 000 for 3 years at 2% per year compound interest.  
Work out the value of the investment at the end of 3 years.

HK\$.....

**(Total for Question 8 is 3 marks)**

9 Solve the simultaneous equations

$$\begin{aligned}3x + y &= 13 \\ x - 2y &= 9\end{aligned}$$

Show clear algebraic working.

$$x = \dots\dots\dots$$

$$y = \dots\dots\dots$$

**(Total for Question 9 is 3 marks)**

10 Show that  $4\frac{2}{3} \div 3\frac{5}{9} = 1\frac{5}{16}$

**(Total for Question 10 is 3 marks)**

DO NOT WRITE IN THIS AREA

DO NOT WRITE IN THIS AREA

DO NOT WRITE IN THIS AREA

11

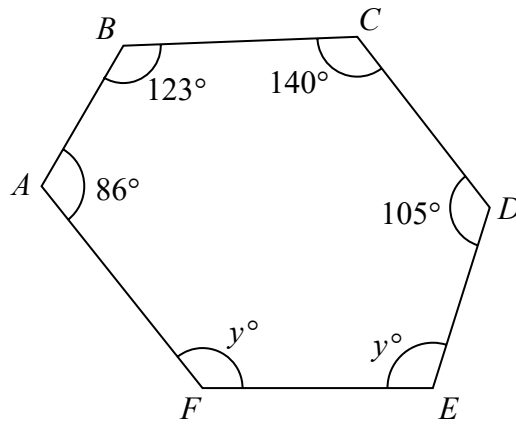


Diagram **NOT** accurately drawn

$ABCDEF$  is a hexagon.

Work out the value of  $y$ .

$y = \dots\dots\dots$

**(Total for Question 11 is 4 marks)**

DO NOT WRITE IN THIS AREA

DO NOT WRITE IN THIS AREA

DO NOT WRITE IN THIS AREA

12 The table shows information about the amount of money that 120 people spent in a shop.

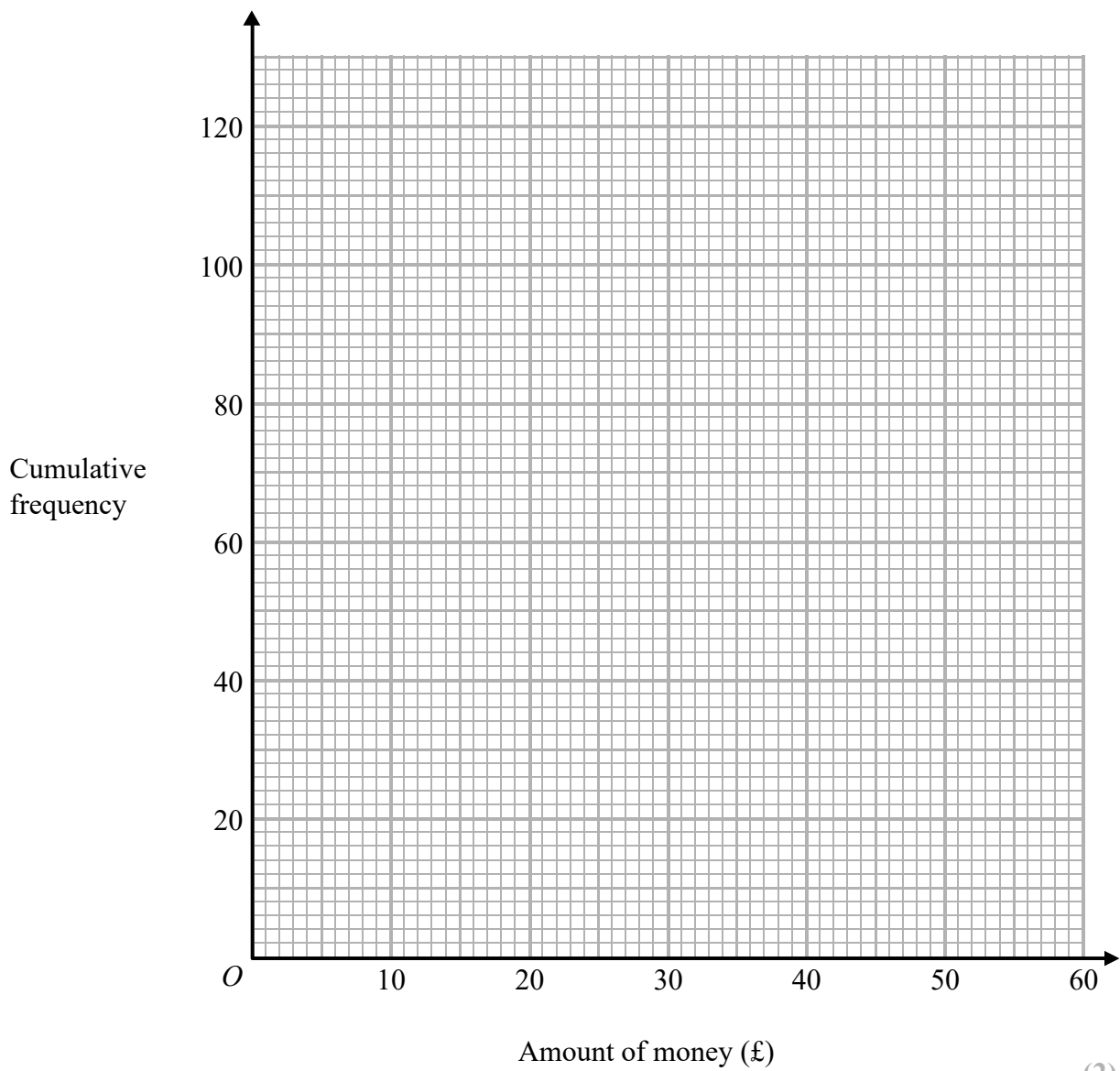
Amount of money (£ $m$ )	Frequency
$0 < m \leq 10$	8
$10 < m \leq 20$	17
$20 < m \leq 30$	25
$30 < m \leq 40$	40
$40 < m \leq 50$	22
$50 < m \leq 60$	8

(a) Complete the cumulative frequency table.

Amount of money (£ $m$ )	Cumulative frequency
$0 < m \leq 10$	
$0 < m \leq 20$	
$0 < m \leq 30$	
$0 < m \leq 40$	
$0 < m \leq 50$	
$0 < m \leq 60$	

(1)

(b) On the grid, draw a cumulative frequency graph for your table.



(2)

(c) Use your graph to find an estimate for the median amount of money spent in the shop by these people.

£.....

(2)

**(Total for Question 12 is 5 marks)**

13 Make  $b$  the subject of  $P = \frac{1}{2}ab^2 + c$  where  $b$  is positive.

.....  
**(Total for Question 13 is 3 marks)**

---

DO NOT WRITE IN THIS AREA

DO NOT WRITE IN THIS AREA

DO NOT WRITE IN THIS AREA

DO NOT WRITE IN THIS AREA

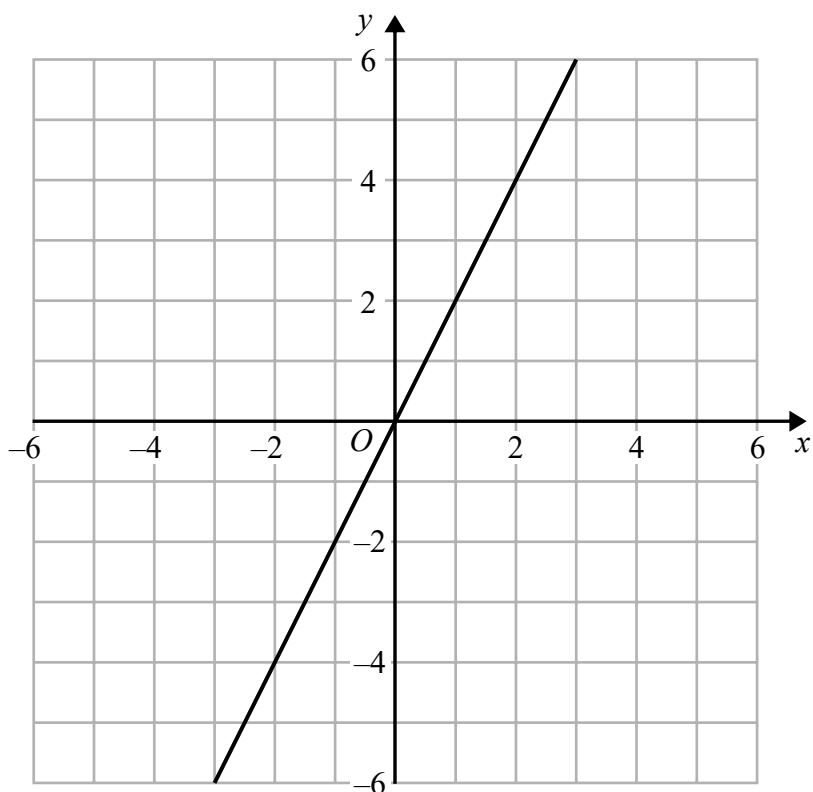
DO NOT WRITE IN THIS AREA

DO NOT WRITE IN THIS AREA

14 The line with equation  $y = 2x$  is drawn on the grid.

(a) On the same grid, draw the line with equation  $4x + 3y = 12$

(2)



(b) Show, by shading on the grid, the region defined by all four inequalities

$$y \leq 2x$$

$$4x + 3y \leq 12$$

$$y \geq -3$$

$$x \leq 4$$

(3)

(Total for Question 14 is 5 marks)

15 There are 100 students in Year 11

All 100 students study at least one of art, drama and music.

- 7 of the students study art and drama and music.
- 23 of the students study art and drama.
- 35 of the students study art and music.
- 12 of the students study music and drama.
- 65 of the students study art.
- 52 of the students study music.

(a) Draw a Venn diagram to show this information.

(3)

One of the 100 students is selected at random.

(b) Find the probability that this student studies Drama but not Music.

.....  
(1)

Given that the student studies Drama,

(c) find the probability that this student also studies Art.

.....  
(1)

**(Total for Question 15 is 5 marks)**

DO NOT WRITE IN THIS AREA

DO NOT WRITE IN THIS AREA

DO NOT WRITE IN THIS AREA



DO NOT WRITE IN THIS AREA

DO NOT WRITE IN THIS AREA

DO NOT WRITE IN THIS AREA

16  $M$  is inversely proportional to  $g^3$   
 $M = 24$  when  $g = 2.5$

(a) Find a formula for  $M$  in terms of  $g$

.....  
(3)

(b) Work out the value of  $g$  when  $M = \frac{1}{9}$

$g =$  .....  
(2)

**(Total for Question 16 is 5 marks)**

17 The function  $f$  is such that  $f(x) = \frac{3}{x-2}$

(a) Find  $f(1)$

.....  
(1)

(b) State which value of  $x$  must be excluded from any domain of  $f$

.....  
(1)

The function  $g$  is such that  $g(x) = x + 4$

(c) Calculate  $fg(2)$

.....  
(2)

**(Total for Question 17 is 4 marks)**

18 Solid **A** and solid **B** are mathematically similar.

Solid **A** has surface area  $384 \text{ cm}^2$

Solid **B** has surface area  $864 \text{ cm}^2$

Solid **B** has a volume of  $2457 \text{ cm}^3$

Calculate the volume of solid **A**.

..... $\text{cm}^3$

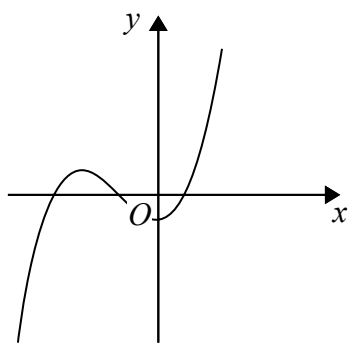
**(Total for Question 18 is 3 marks)**

DO NOT WRITE IN THIS AREA

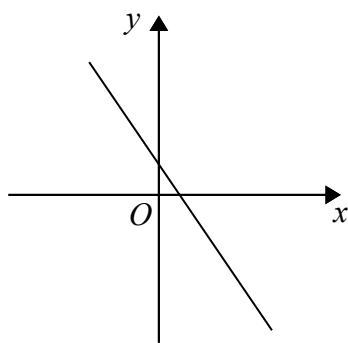
DO NOT WRITE IN THIS AREA

DO NOT WRITE IN THIS AREA

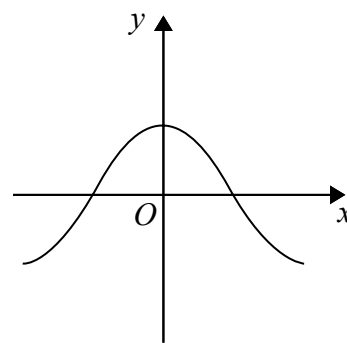
19 Here are nine graphs.



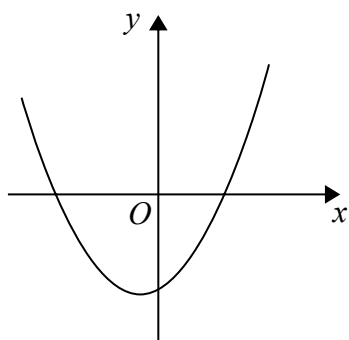
Graph A



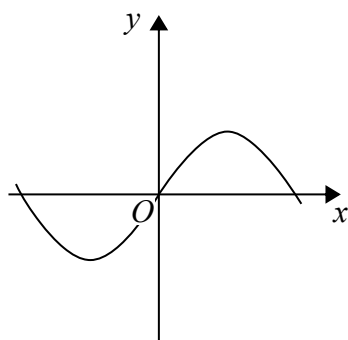
Graph B



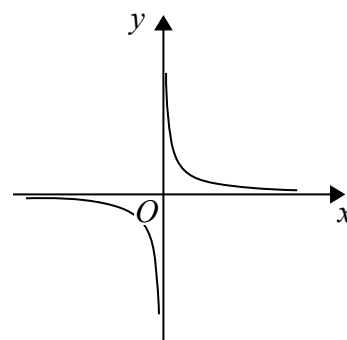
Graph C



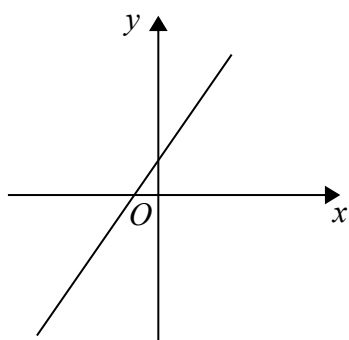
Graph D



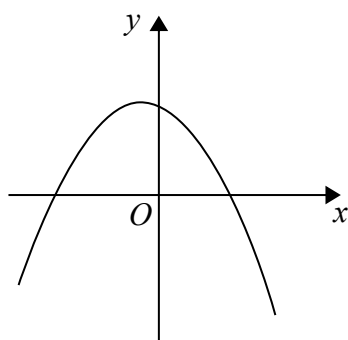
Graph E



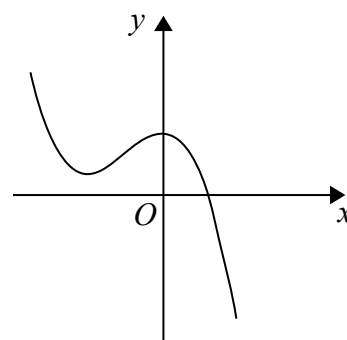
Graph F



Graph G



Graph H



Graph I

Complete the table below with the letter of the graph that could represent each given equation.

Equation	Graph
$y = \sin x$	
$y = 2 - 3x$	
$y = x^2 + x - 6$	
$y = x^3 + 3x^2 - 2$	

(Total for Question 19 is 3 marks)

- 20 Gemma has 9 counters.  
Each counter has a number on it.



Gemma puts the 9 counters into a bag.  
She takes at random two counters from the bag.

- (a) Work out the probability that the number on each counter is an even number.

.....  
(2)

- (b) Work out the probability that the sum of the numbers on the two counters is an odd number.  
Show your working clearly.

.....  
(3)

**(Total for Question 20 is 5 marks)**

DO NOT WRITE IN THIS AREA

DO NOT WRITE IN THIS AREA

DO NOT WRITE IN THIS AREA

21 Here is triangle  $LMN$ , where angle  $LMN$  is an obtuse angle.

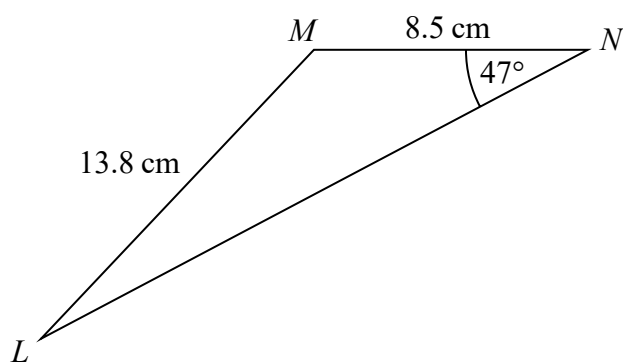


Diagram **NOT** accurately drawn

Work out the area of triangle  $LMN$ .  
Give your answer correct to 3 significant figures.

..... $\text{cm}^2$

**(Total for Question 21 is 6 marks)**

22 (a) Write  $2x^2 - 8x + 9$  in the form  $a(x + b)^2 + c$

.....  
(3)

(b) Hence, or otherwise, explain why the graph of the curve with equation  $y = 2x^2 - 8x + 9 = 0$  does not intersect the  $x$ -axis.

.....  
.....  
(1)

**(Total for Question 22 is 4 marks)**

23  $ABCD$  is a parallelogram.

$$\vec{AB} = \begin{pmatrix} 2 \\ 3 \end{pmatrix} \quad \vec{AC} = \begin{pmatrix} 9 \\ 4 \end{pmatrix}$$

Find the magnitude of  $\vec{BC}$

.....  
**(Total for Question 23 is 3 marks)**

DO NOT WRITE IN THIS AREA

DO NOT WRITE IN THIS AREA

DO NOT WRITE IN THIS AREA

24 Show that  $\frac{\sqrt{12} - 1}{2 - \sqrt{3}}$  can be written as  $4 + 3\sqrt{3}$

Show your working clearly.

(Total for Question 24 is 4 marks)

25 A particle moves along a straight line.  
The fixed point  $O$  lies on this line.  
The displacement of the particle from  $O$  at time  $t$  seconds,  $t \geq 0$ , is  $s$  metres, where

$$s = t^3 - 5t^2 - 8t + 3$$

Find the value of  $t$  for which the particle is instantaneously at rest.

$t = \dots\dots\dots$

(Total for Question 25 is 4 marks)

**TOTAL FOR PAPER IS 100 MARKS**

DO NOT WRITE IN THIS AREA

DO NOT WRITE IN THIS AREA

DO NOT WRITE IN THIS AREA

**BLANK PAGE**